

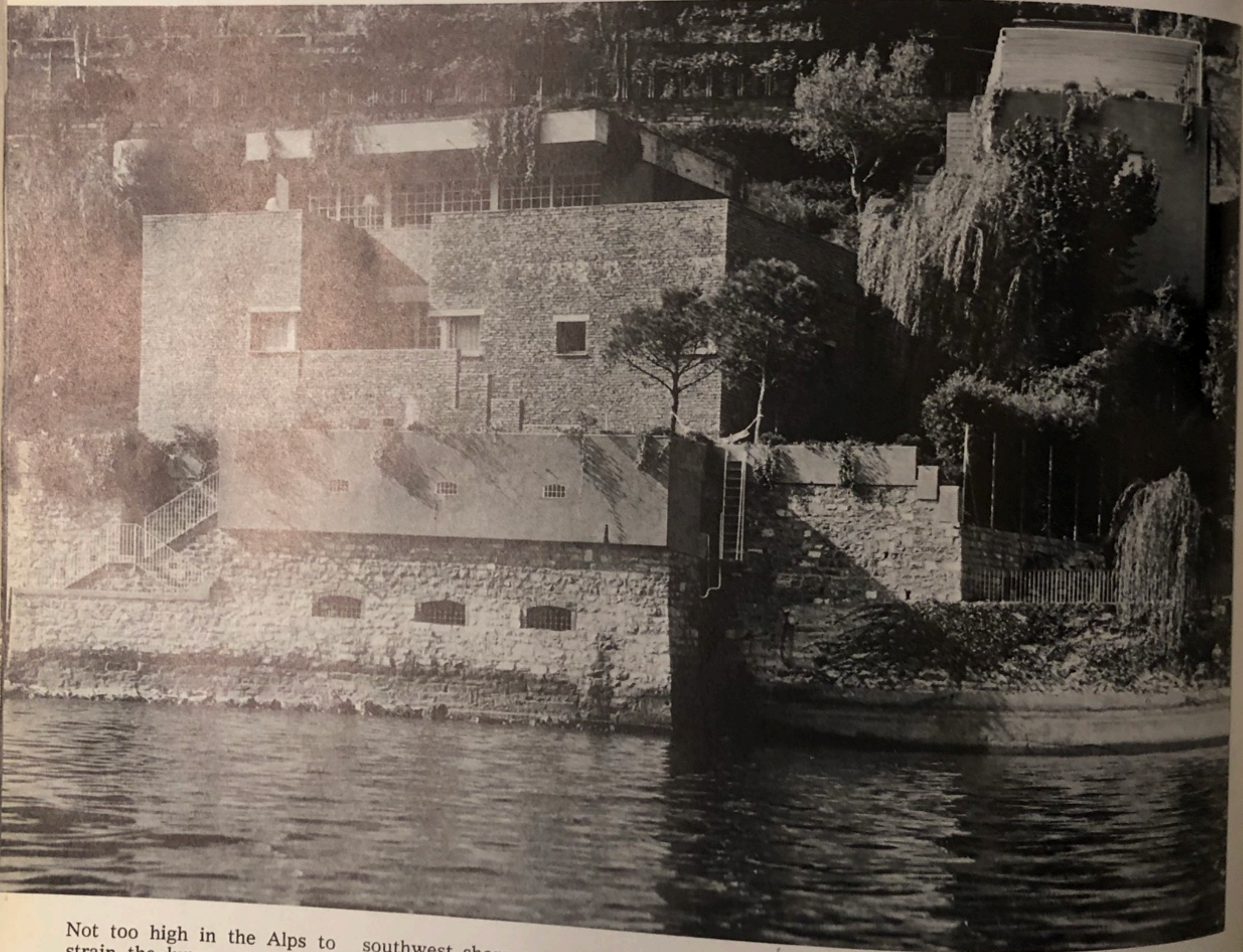
Asti legerdemain on Lake Como

Building a villa anchored to a sloping shore, Sergio Asti produces a stone-walled, flower strewn enclave. Its volumes—furnished with the slickest of Italian industrial design—frame the most idyllic of natural vistas



1

2



Not too high in the Alps to strain the lungs, not too far from Milan for holiday-minded Italians, not yet despoiled of the exquisite purity of its breathtaking landscape and deep glacial waters, Lake Como is naturally enough the site of interesting houses, not only vacation houses but year-round villas such as the one illustrated here, which is at Brienno on the lake's

southwest shore.

There are surely more pretentious examples than this residence—though it is amply appointed with in-town amenities for the support of ambitious, sophisticated social activity (much wardrobe space, many bedrooms, dressing rooms, bathrooms, a formal dining room, large kitchen, even a separate structure to lodge the help).

The environment, however, is unique in its delicious blend of elegant, avant-garde Italian *luxe* inside, the sense of being in a fortified castle above the rabble but with perfect views in all directions, and finally an architectural exterior perfectly and discreetly in harmony with the local tradition.

This is total design far transcending the elementary

definition of the term, i.e. one man's personal creation of building, interiors, and furnishings. For each aspect of the job involved a difficult problem or an original statement.

Take the site, for example. Its extremely steep slope and position on the water line raised the problem of how to prevent the house-weighted
(continued on page 59)

1 Terrace swimming pool.
2 Outer walls are stone and ochre-colored plaster. On the upper floor are a lounge, living room, dining room, and kitchen. On lower floor are another sitting room and all the bedrooms.
3 Entry stairs.
4 Small house topped with parking terrace.
5 Access is from street higher than the property. At right is the roof-parking terrace shaded by canvas canopy.



3



- 1 entry
- 2 main house
- 3 staff house with parking roof
- 4 pool
- 5 lake front
- 6 street above



4

1 Terrace swimming pool.

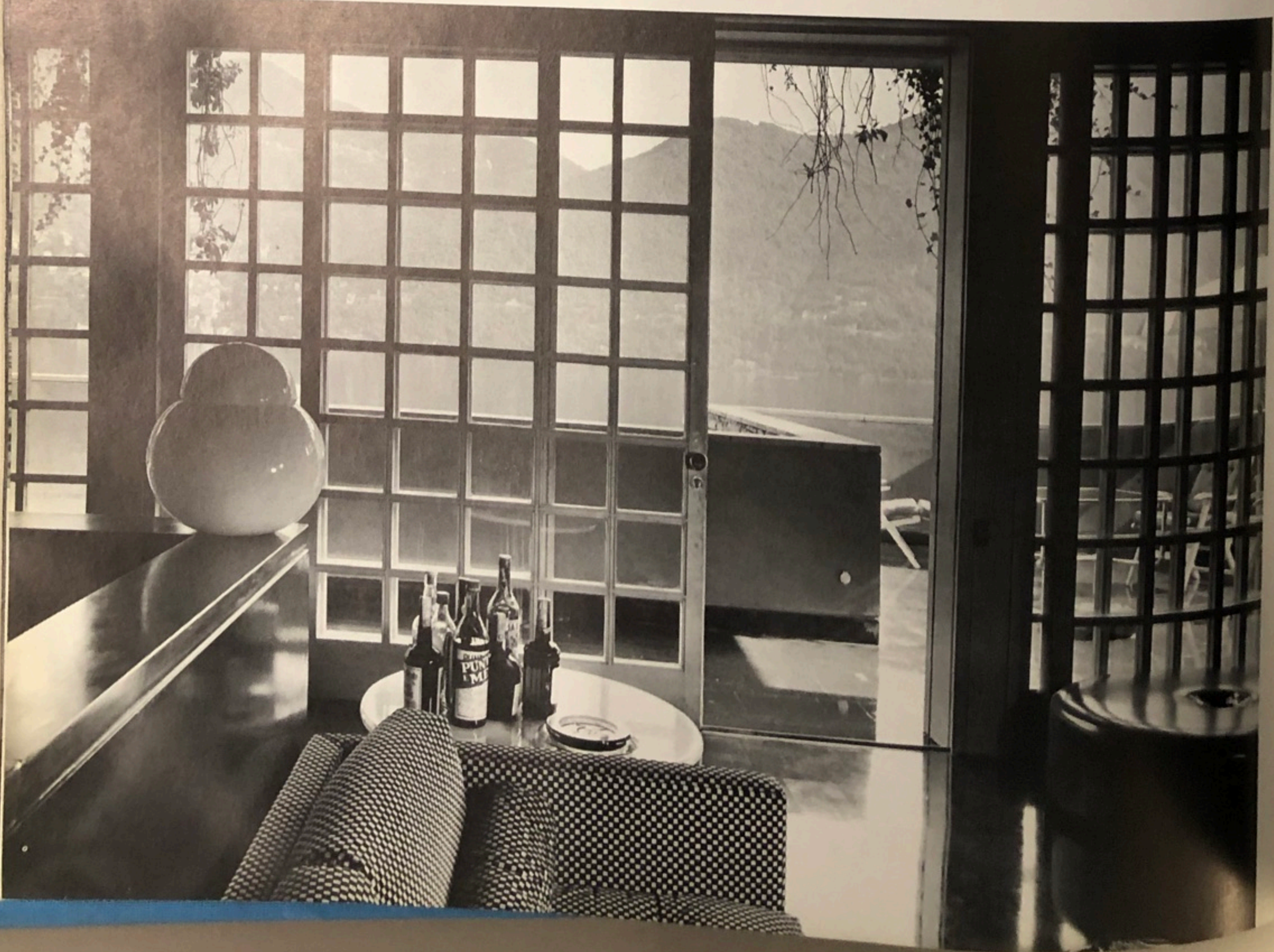
2 Outer walls are stone and ochre-colored plaster. On the upper floor are a lounge-living room, dining room, and kitchen. On lower floor are another sitting room and all the bedrooms.

3 Entry stairs.

4 Staff house topped with parking terrace.

5 Access is from street higher than the property. At right is the roof-parking terrace shaded by canvas canopy.





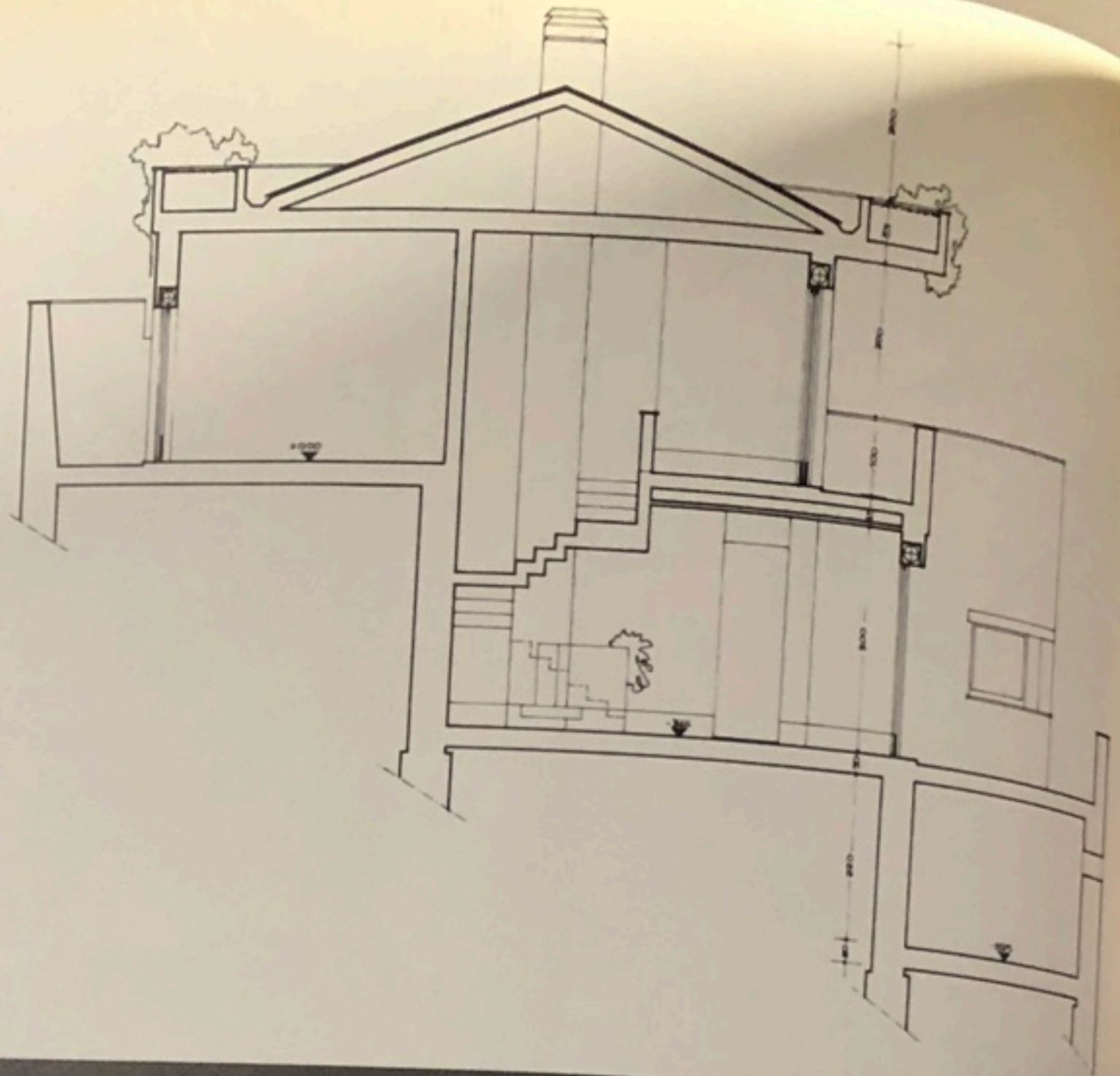


Asti on Lake Como

Photographs on pages 56 and 57 (preceding) show the upper living room/lounge and its adjacent terrace, with sliding glass doors between. Like the entire house, these areas are floored in polished black stone. Walls are white plaster, and the ceiling and low divider are in dark orange stucco highly polished. Silver-painted wood was used for the small window frames on both levels of the house. White dining table is extendable. The Zanotta sofa

is upholstered in brown and white velvet. Asti's "Trefoil" table has a white marble top.

Upper living room furnishings: The following manufactured items were designed by Sergio Asti—"Charlotte" chairs made by Zanotta; "Trefoil" tables made by Poltronova; "Daruma" lamps made by Candle; miscellaneous glass and ceramic accessories made by Credit and Salviati. Dining table and beds: Stillwood. Lower living room is furnished with the same manufactured items as upper.



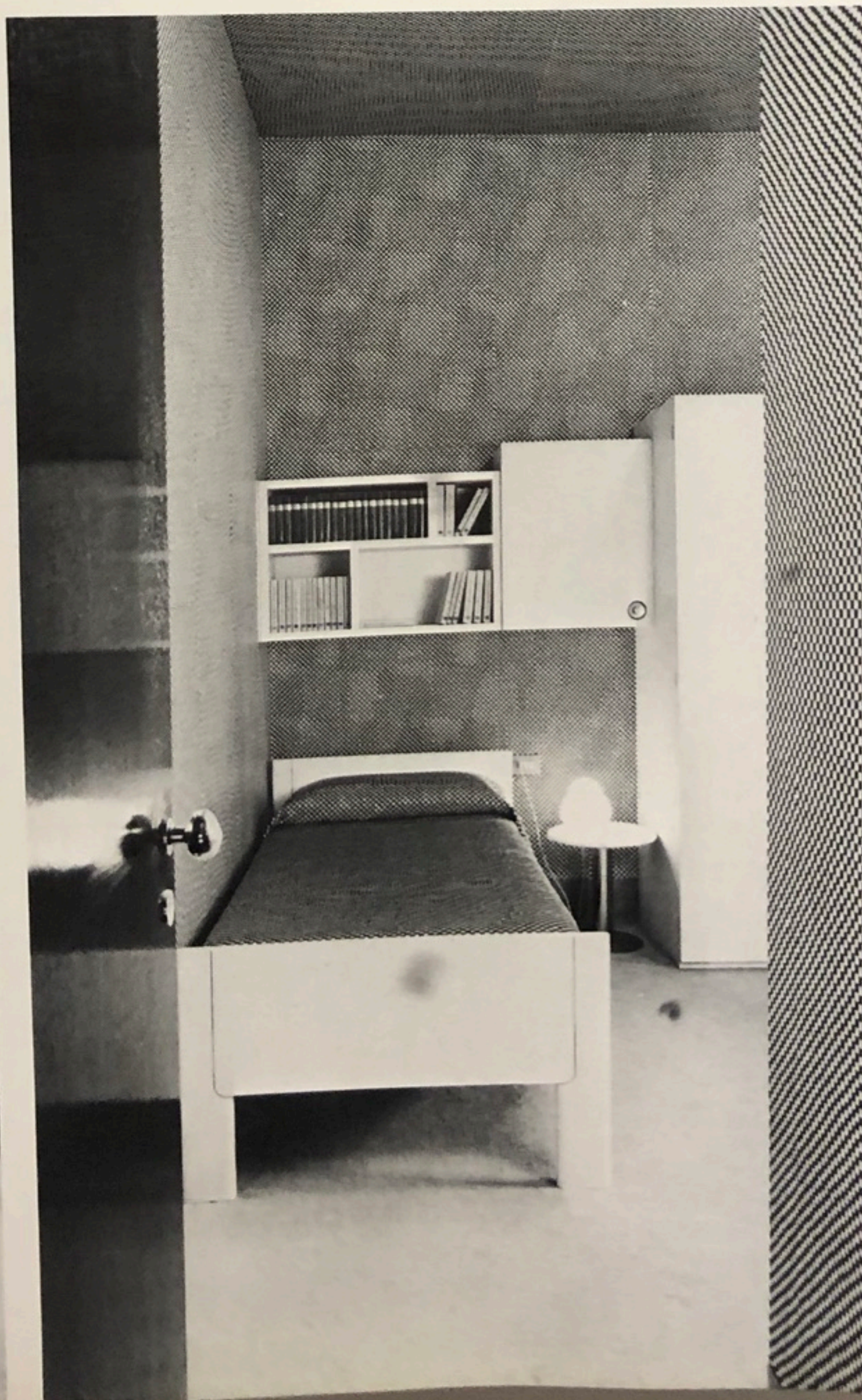
...on lower floor
...furniture and colors
...has a
...in the
...the black
...is relieved by a
...carpet.



...with brown-and-
...paper on walls
...matching bed-
...furni-
...carpet.

Below:
 Living room on lower floor
 uses similar furniture and colors
 as the one above, but has a
 very moderne hearth in the
 polished dark orange stucco
 of the ceiling, and the black
 polished stone floor on its
 upper level is relieved by a
 honey-colored carpet.

Below right:
 A bedroom with brown-and-
 white checkered paper on walls
 and ceilings, matching bed-
 spread, white-lacquered furni-
 ture, honey-colored carpet.



(continued from page 54)

earth from sliding into the lake. Also the fact that the property is located right below the street made the securing of privacy a problem. Asti's multi-story plan, in which the room-over-room layout allows for deep-anchoring walls in earth and water, also provides many terraces to be used as outdoor lounges (one accommodates the swimming pool). The positioning of high walls—including those around the entrance stair that snakes around from the street—preserves privacy. Grounds inside the walls and between the main and servant buildings were landscaped by the architect with a *millefleurs* profusion of flowers, bushes, and orientally clever, path-making paving stones to create a private paradise whose clever perspectives and vistas provide a variety of experiences rarely found in so small a space.—O.G.