

sr
1

Part I of our mid-year Furniture Report

reflects some of the prominent design directions apparent at the June markets. Storage units are often vertical with an elaboration toward softer lines, inlay details, exotic woods. Traditional wood pieces appear in painted finishes. And upholstered chairs and sofas are in flowing lines with softer multi-foam backs for deep-sinking comfort. — J. W.



1

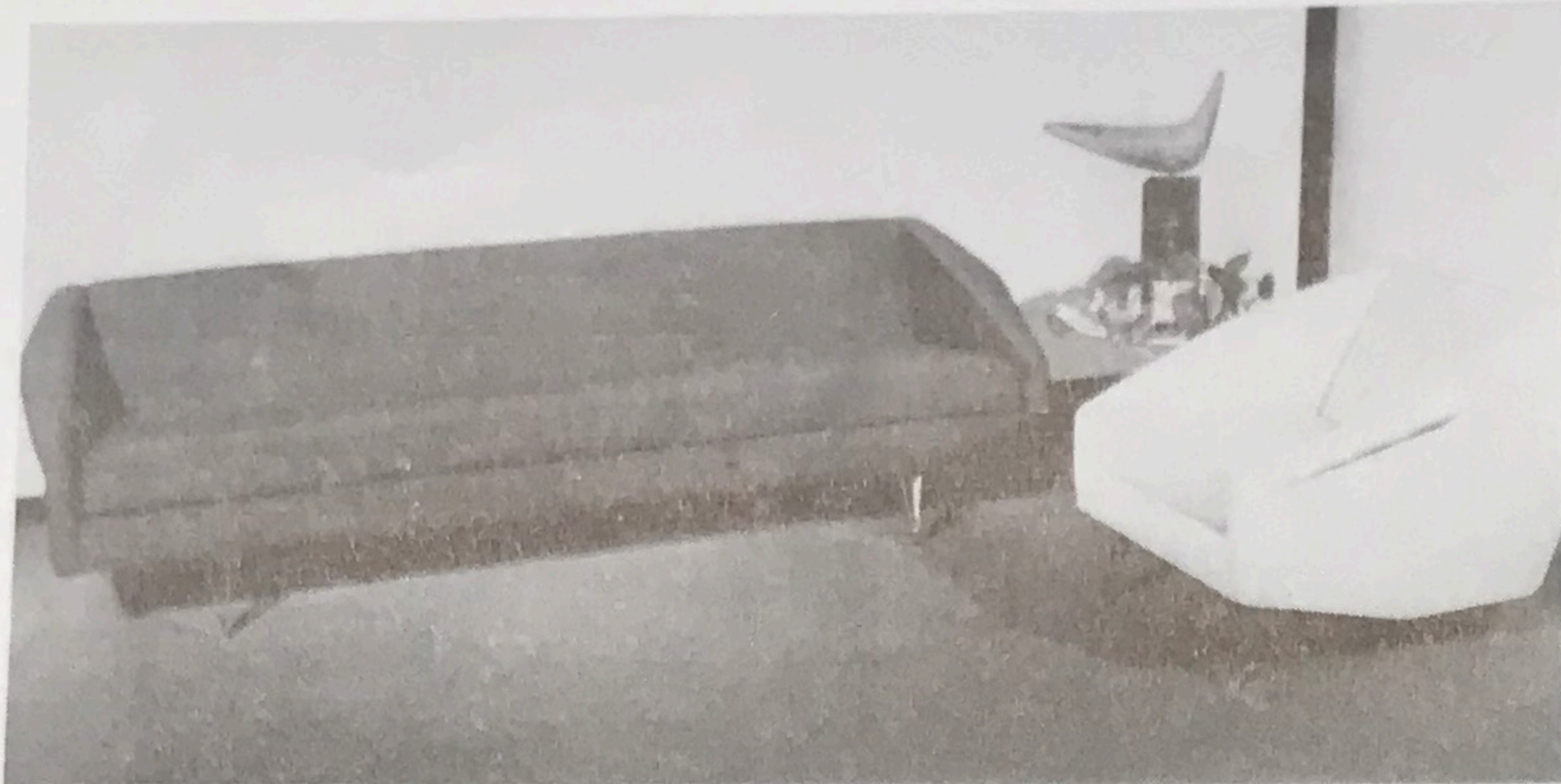
ROMWEBER



2



3



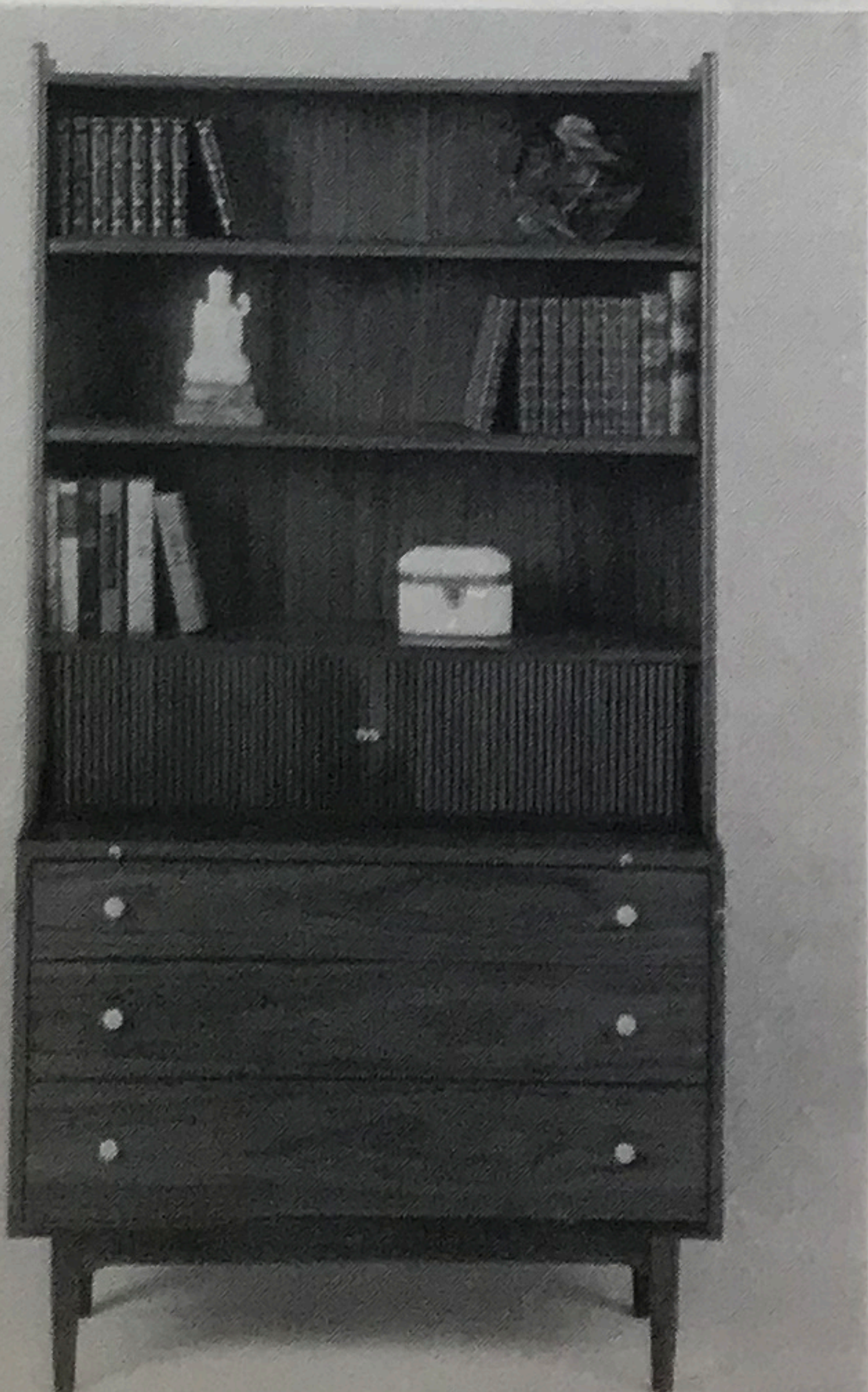
1 M. SINGER AND SONS



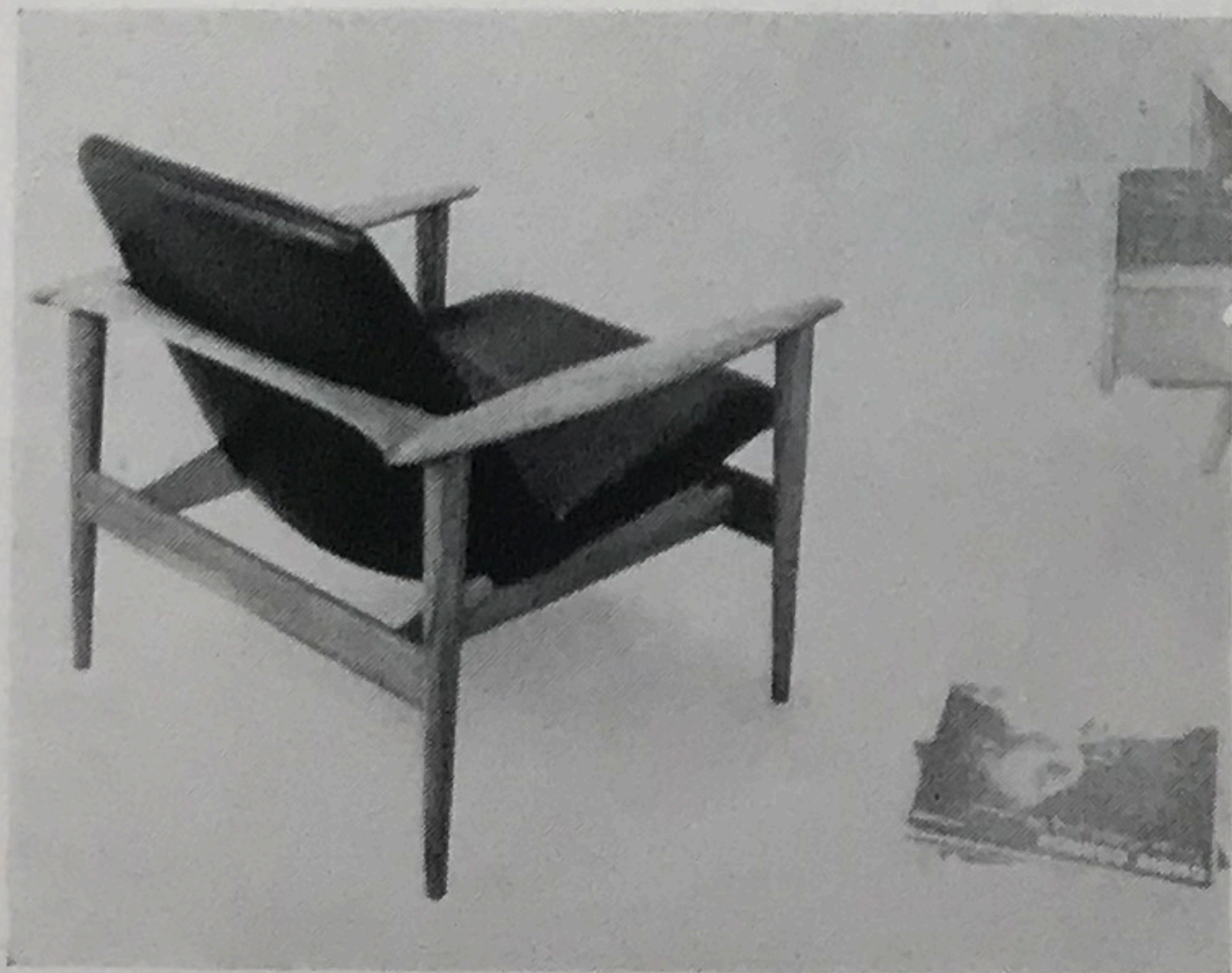
2 M. SINGER AND SONS



3 JOHN WIDDICOMB



4 DREXEL



5 THE OTTO GERDAU COMPANY



6 JOHN STUART



7 VALLEY UPHOLSTERY



8 WIDDICOMB-MUELLER



9 SIMMONS



10 FICKS REED

M. Singer and Sons again are showing new designs by Italian architect Gio Ponti. The sofa and chair (1) emphasize an uncluttered V theme which the designer carries out with an angled profile of the underside and back, as well as the forward-sloping arms. In the legs, the V is constructed of solid brass. Backs of sofa and chair are only 25 inches high enabling them to be placed in front of a window. The handsome open arm chair (2) designed by Bertha Schaefer has been sculptured of walnut for elegance of line and detail. Cushions are of loose foam.

John Widdicomb (3) is showing a monumental seven-foot "Lord and Lady" bed in cherry with vertical strips and spindles of American walnut, designed by Dale V. Ford. The Mondrian type design of the little night table carries out the vertical slat motif of the bed; the table comes in left and right side versions. All woods for the ten-drawer, 74-inch, frame-within-a-frame, triple bureau have been carefully selected for the grain to create both a matched vertical and horizontal effect.

Drexel (4) calls their collection "Declaration" this year. Inspired by the Shaker tradition, the walnut secretary shown combines a commode and secretary into one unit. As a secretary, the tambour doors hide a storage gallery with letter slots and shelves. The pull-out writing shelf is above three drawers.

The Otto Gerdau Company (5), importers of Danish designed furniture, have a collection of open arm chairs of light scale. Shown at left is a low scaled comfortable chair with a squared frame of oiled teakwood. The contoured seat of upholstered black leather is canted within its frame.

John Stuart (6) has added a new Finn Juhl chair to their Danish craftsmen group. Of oiled solid Oriental teak, the chair has sculptured and upholstered seat with sloping front edge for added comfort. Open frame is light in proportion.

Valley once again shows a large variety of Norman MacGregor's designs. This year's "World of Modern" collection includes an over-size contoured chaise (7). Shown in a textured pale pumpkin upholstered foam, the chaise has a carefully angled walnut base on casters for easy moving.

Widdicomb-Mueller (8) is adding to the George Nakashima designed group of an earlier market. We show here a handsome solid piece to be used either as a dining or living room cabinet. The folding wood gridded doors have recessed panels of matched veneers with upward sweeping grains. The top of solid walnut has a liting overhang. Another detail of design interest is the pierced stretcher legs treatment.

Simmons (9) has added several designs to their combination sofa-bed line. Shown is one of thin lines and tufted seat and back with walnut finished legs and brass ferrules. The seat slides forward from the back making a comfortable single bed.

Ficks Reed (10) has a new version of their perennial rattan collection, "Country Casual '60." A new double strand rattan weaving in an intricate diamond pattern produces a lacy effect. Available in a wide choice of Ficks finishes and fabrics.