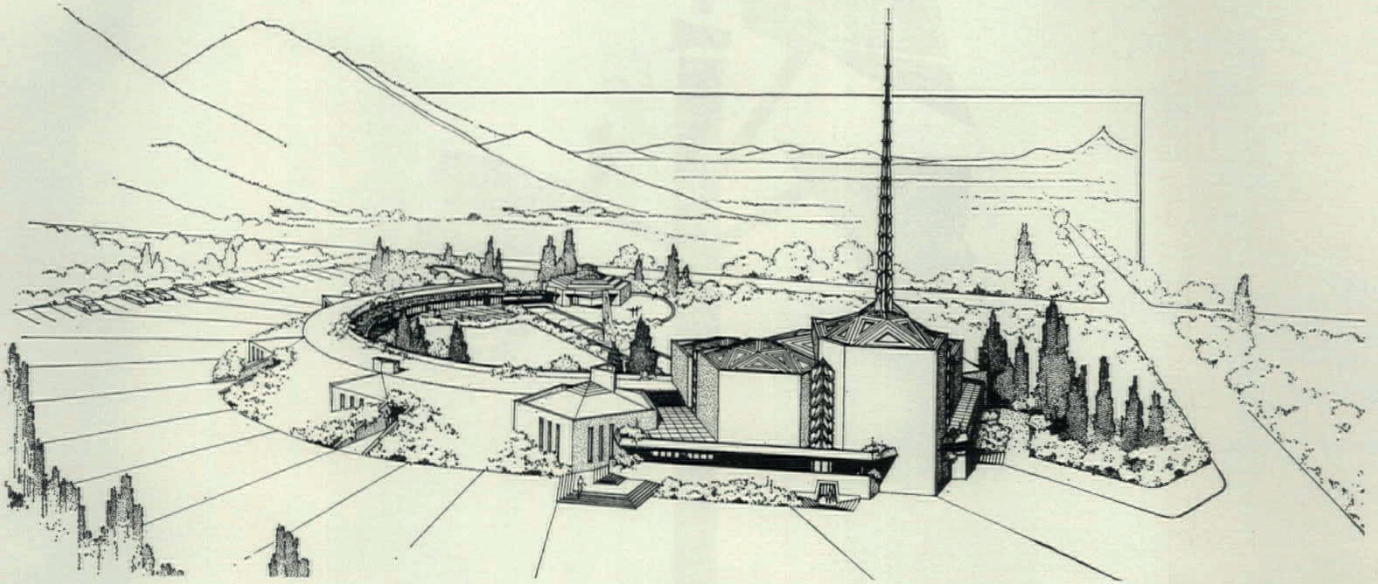
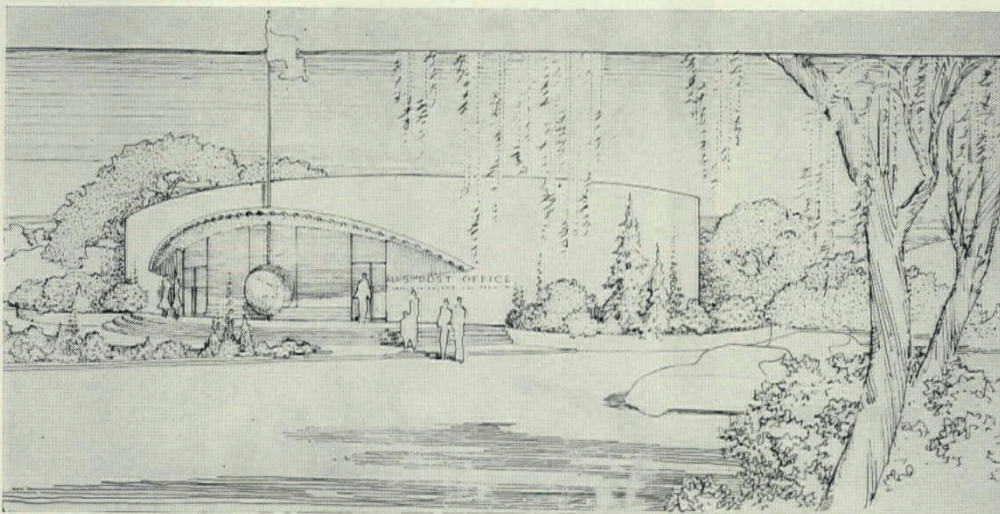


## A roundup of recent and significant proposals



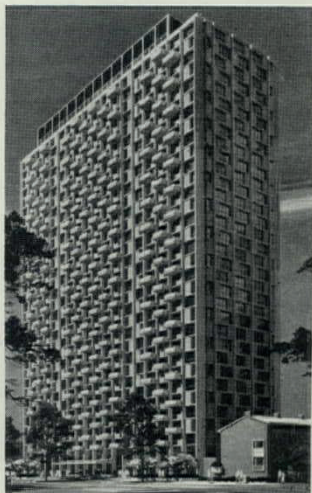
**TWO TALIESIN DESIGNS**

Before the year is out, construction will begin on two new structures bearing the stamp of Frank Lloyd Wright: the one above an Evangelical Lutheran church in Scottsdale, Ariz., and that at left a U.S. Post Office in the Marin County (Calif.) Civic Center, both carried out by Taliesin Associated Architects, William Wesley Peters, chief architect. The church sanctuary will be roofed by a series of polygonal domes, the tallest topped by a thin golden spire and pierced to direct sunlight onto the altar. The post-office structure will be of concrete masonry and plywood box trusses.



### PHILADELPHIA APARTMENTS

Marked by official ground-breaking in April, the rebirth of Philadelphia's historic Society Hill begins with this 33-story apartment house and 18 town houses, all designed by Philadelphia Architects Stonorov & Haws. Red brick and white marble touches around the first floor will recall the original Georgian houses still standing in Society Hill, even though the rest of the exterior will be gray brick and glass. The structure will be of reinforced concrete, a lightweight concrete for the tower and a heavier one for the foundation.



### LOS ANGELES APARTMENTS

In Los Angeles, the construction of high-rise apartments continues apace; the one at right, to cost \$7 million for 22 stories, will be called Lesser Towers for the owner and developer, Louis Lesser Enterprises. All 236 apartments, which range in size from efficiencies up to two-bedroom-and-den units, will have balconies or terraces and underground garages. On top, there will be a communal swimming pool and landscaped terraces. Architects and engineers: Daniel, Mann, Johnson & Mendenhall of Los Angeles.

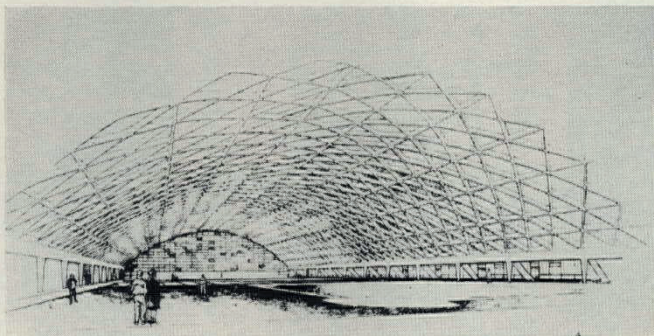
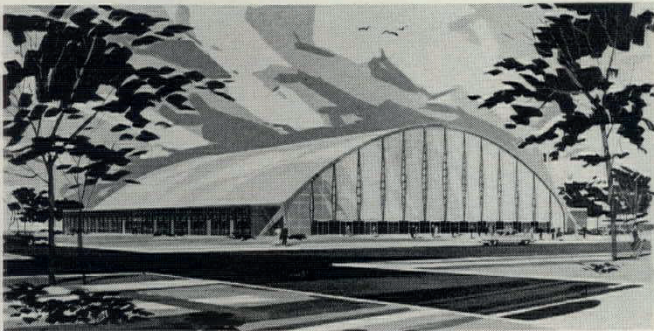
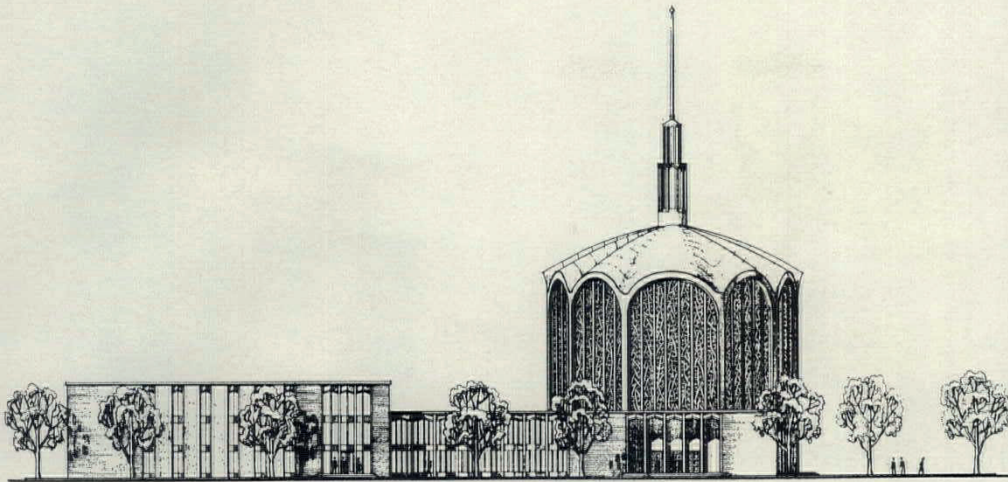


*continued on page 45*



**WASHINGTON CHAPEL**

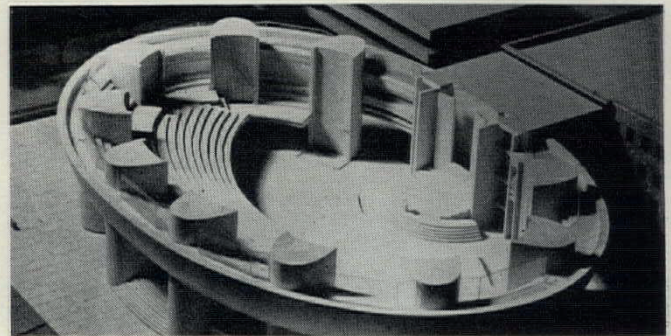
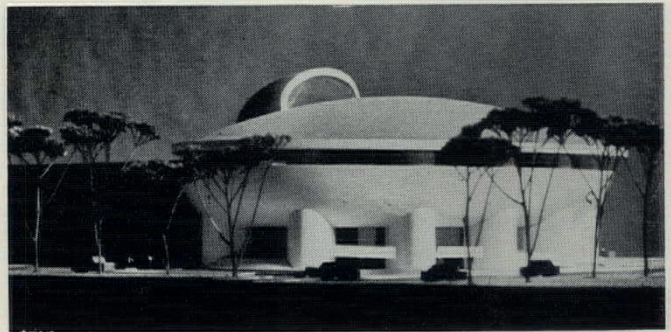
A fluted dome and spire will top the interdenominational chapel for George Washington University's religious center, to cover almost a block in Washington, D.C. Tall windows of contemporary mosaic glass will fill each of the 12 sides. Attached to the chapel will be administrative offices, choir rooms, and classrooms. Architects: Mills, Peticord & Mills of Washington.



**NERVI DESIGN FOR DARTMOUTH COLLEGE FIELD HOUSE**

By 1962, Dartmouth trackmen, accustomed to jogging through the New Hampshire snow, will run inside this field house transplanted from Rome to Hanover. Pier Luigi Nervi's design for the Palazzetto dello

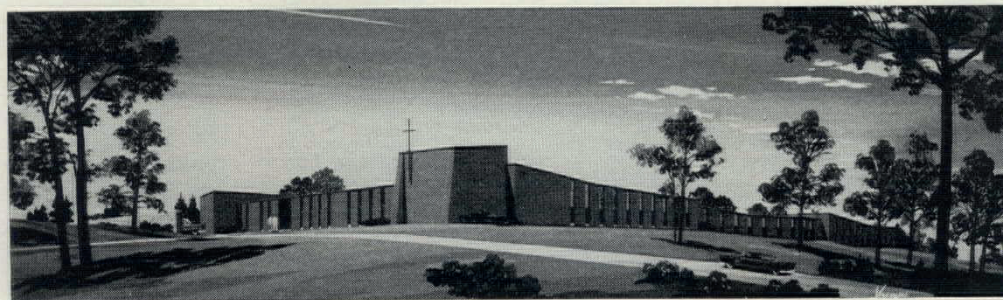
Sport, built for the 1960 Olympics, is being adapted to a rectangular shape, enclosing about 2 acres under a lamella network of reinforced concrete ribs. Associated with Nervi are Campbell & Aldrich.



**SOUTHERN BAPTIST CHAPEL IN MISSOURI**

The open-and-shut model above is that of the Tower Grove Baptist Church in St. Louis, which will consist of a reinforced concrete saucer, shallow dome, and half-shell skylight. Under the dome, as the lower

photo shows, a series of ramps will divide the column-free sanctuary into segments. A glazed buffer corridor will ring the perimeter, shutting out street noises. Architects: Hellmuth, Obata & Kassabaum.

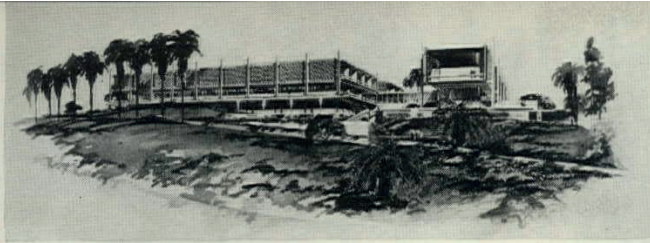


**PHILADELPHIA COLLEGE**

Wrapped around two open courts, these buildings will serve 70 members of the Christian Brothers teaching order at La Salle College. Rows of cells will form one court's walls; the refectory, commons, and chapel are grouped around the other. Architects: Carroll, Grisdale & Van Alen.

*continued on page 47*

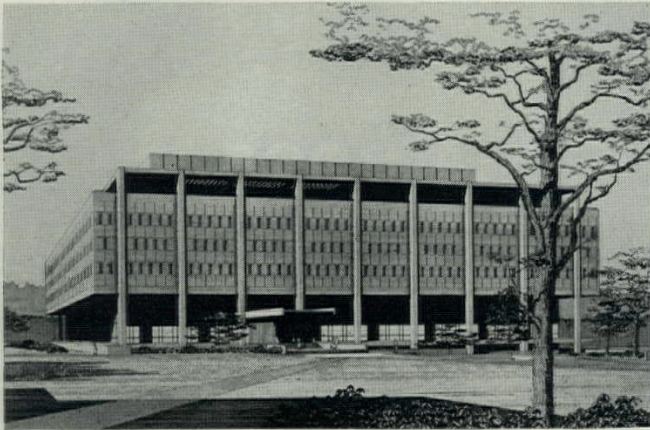




**SOUTHERN CALIFORNIA WATER DISTRICT OFFICES**

This design by William L. Pereira & Associates for the Metropolitan Water District of Southern California will crown a 7-acre site in Los Angeles. Three long three-story

buildings, built alike of cast stone screens, exposed outrigger columns, and glass, will be linked by glass pavilions, one of them a public entrance and display area. Cost: \$5 million.



**UNDERGRADUATE LIBRARY AT PENN**

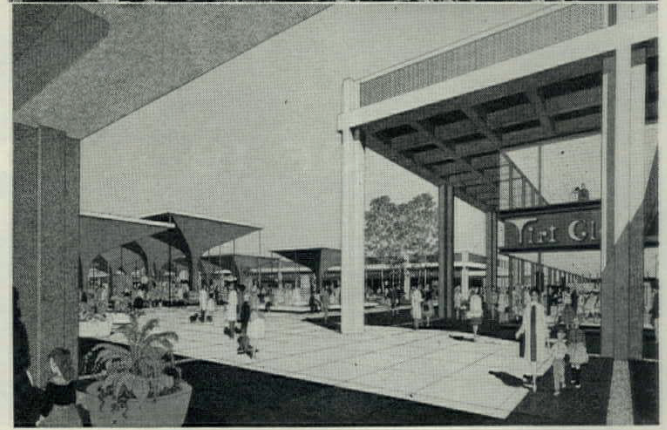
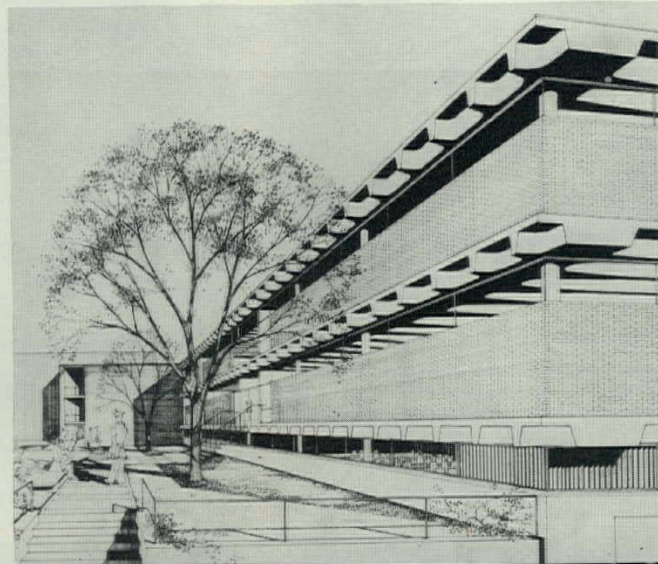
Behind walls of red brick and gray glass, the new library at the University of Pennsylvania will provide the proper climate for rare books as well as the undergraduate collection, a capacity of 1½ million vol-

umes. Designed by Harbeson, Hough, Livingston & Larson of Philadelphia, the eight-story library is under construction, slated for completion early next year. Cost: \$5 million, \$4 million of it from the state.

**HIGH SCHOOL ADDITION IN ST. LOUIS**

Under construction in St. Louis is this three-story addition to Christian Brothers College high school, for more classroom, laboratory, office, and cafeteria space. Exposed reinforced concrete waffle

slabs span two primary beams running the building's length, and overhang windows set high in the brick walls. It will be connected to the gym. Architects: Drake-O'Meara Associates of St. Louis.



**\$50 MILLION PITTSBURGH REDEVELOPMENT**

Across the Allegheny River from the Golden Triangle, Pittsburgh's Urban Redevelopment Authority plans to build Allegheny Center (top), a 78-acre project. Central to the plan are the Buhl Planetarium

and the Carnegie Library, to be surrounded on three sides by new apartments and town houses and on the fourth by a commercial plaza (above). Architects: Deeter & Ritchey; developer: Lewis E. Kitchen.

**PRECAST APARTMENTS IN CANADA**

Up in Manitoba, the Winnipeg architectural firm of Libling, Michener & Associates is watching progress on the small apartment building below, eight stories of precast concrete units being erected now

in Winnipeg. Inside, there will be 31 apartments, many of them with balconies. The total cost is expected to be in the neighborhood of \$550,000, excluding the cost of the land.

END

