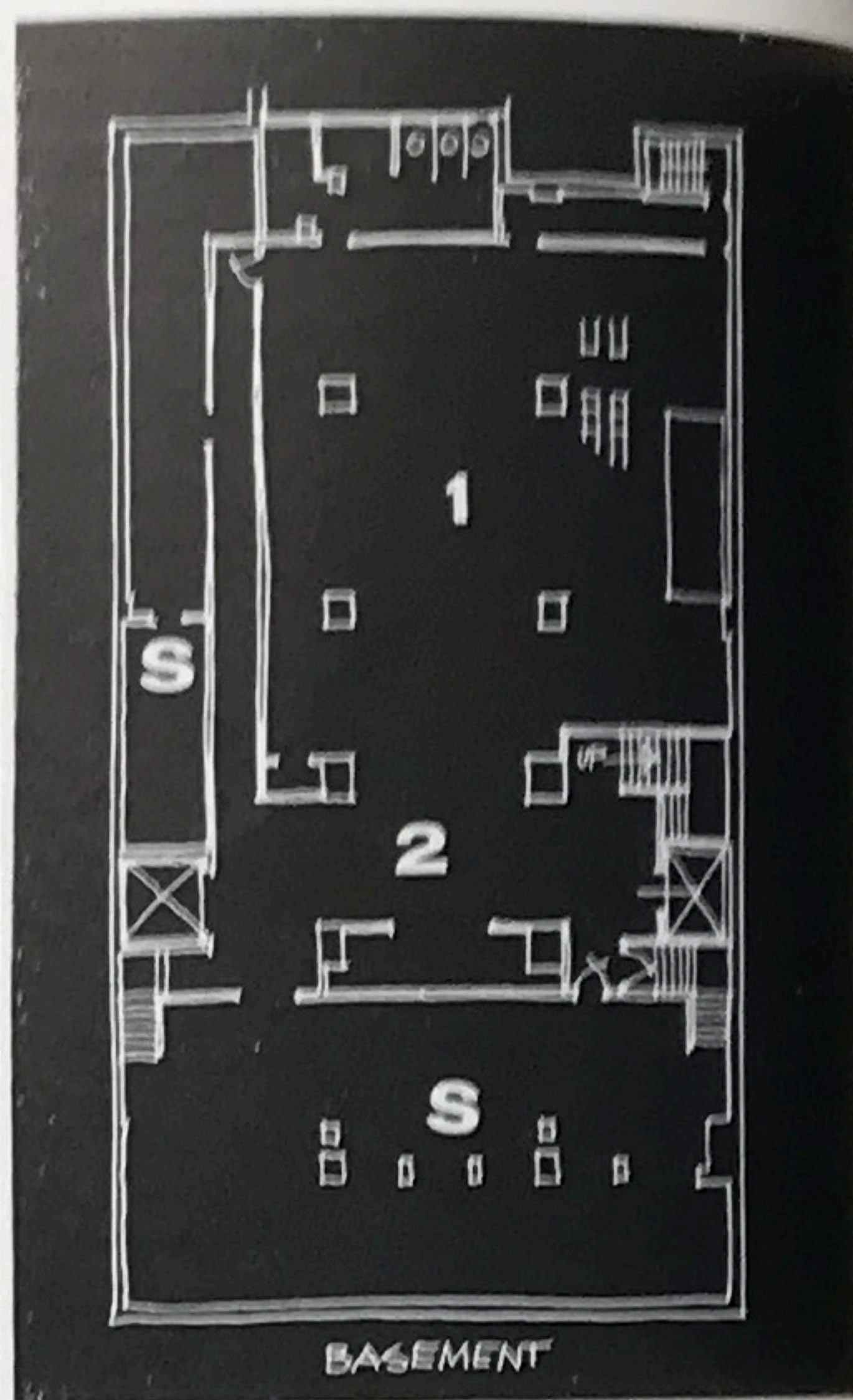


Interiors contract series '56
OFFICES



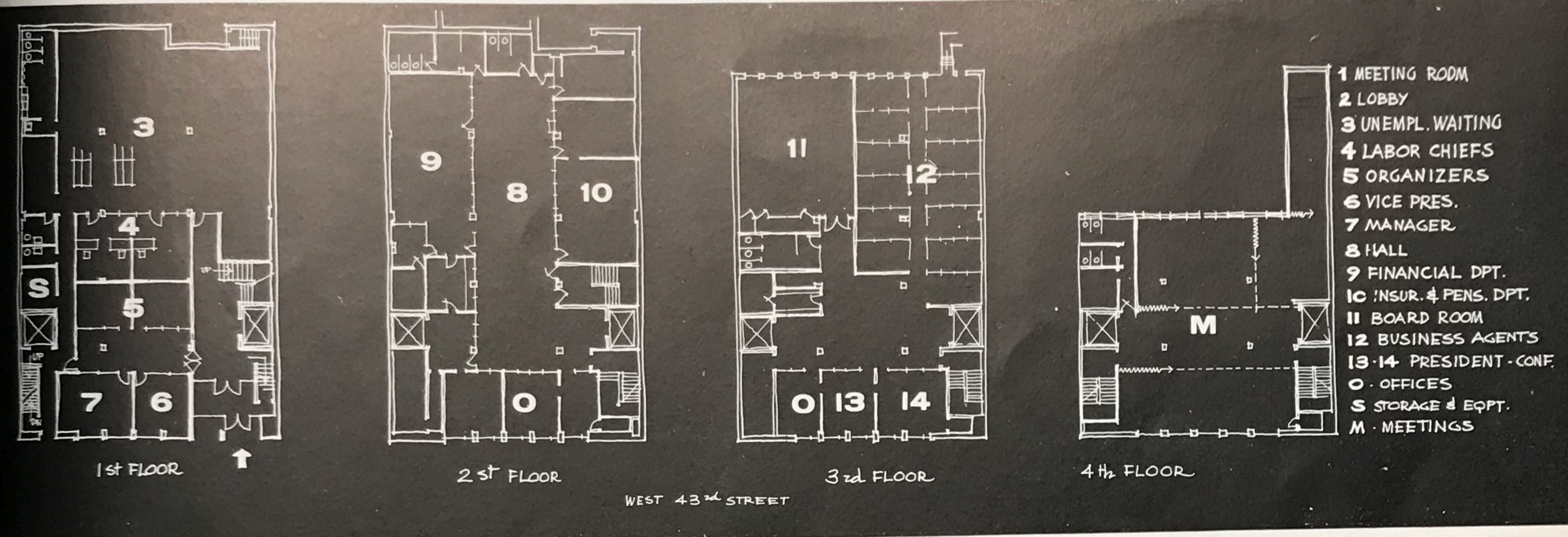
photographs by Lionel Freedman



Building for a union: interiors and facade by Giorgio Cavaglieri

This west 43rd street building, now 30 years old, originally belonged to Schrafft's, changed hands several times, and now provides headquarters for A. F. of L. Dining Room Employees Union Local 1, which has 13,000 members. Architect Cavaglieri retained only the original skeletal frame and masonry in remodeling the building, which he designed and furnished, inside and out. Cavaglieri achieved not only practical functioning with durable materials but an extremely handsome, albeit timeless appearance by his care in designing both large and detailed elements, starting on the exterior with neat, original facade of gray and black granite with aluminum spandrels, to the interiors where lines of light, acoustical and wall surfaces, and furniture, are pleasantly apportioned. Terrazzo floor and mosaic ceiling in lobby are from Foscolo; granite from Marblecraft, Inc.; all lighting fixtures from Gotham Lighting Company; doors: U. S. Plywood; plywood partitions: unit-panel flush "Birch-face" partitions from White Manufacturing Co.; flooring: Matico asphalt tile; custom-built benches from Ganger, Inc.; furniture: Herman Miller Furniture Company, All Steel Equipment Company, and Brunswick-Balke-Collender Co.





World War I Memorial, Redipuglia
Giovanni Greppi

"an impressive if dry restraint that leaves one saddened by the enormity of the sacrifice that it represents . . . in an impressive sweep of twenty-two enormous steps . . . the bodies of 40,000 known dead."



Covered Market, Pescia
Brizzi, Gori, Ricci and Savioli



G. E. Kidder Smith



Lucas

... the architects perceive—
... of the native
... the open brick grille . . .
... the walls."